

TRADING SOFTWARE

FOR SALE & EXCHANGE

Trading Software 2 DVD <i>300+ items cracked trading software.</i>	\$350
TradeStation Systems DVD <i>Wealth! All tested & include screenshots. Open code. Official prices more \$200000! My recommendations and screenshots. <u>ALL for EXCHANGE also!!!</u></i>	\$590
MetaTrader Experts DVD <i>250+ Experts! Official price more \$60000! <u>FREE Decompiling EX4-MQL!</u></i>	\$490
eSignal Add-Ons CD	\$250
MetaStock DVD	\$100
Trading Books, Methods, Patters <i>Subscribe for receipt links for FREE download more 700 items!</i>	FREE
100+ Trading Video DVD's <i>Less \$3 for one DVD (DVD Video or DivX format)</i>	\$300
Full Collection	\$1490

[Subscribe](#) for receipt more information & links for FREE download.

Contacts

andreybbrv@gmail.com
andreybbrv@hotmail.com
andreybbrv@yandex.ru
Skype: andreybbrv

TAS Indicators:

Copyright 2008 Trade Angle Strategies,LLC

I. Adding an indicator to a chart

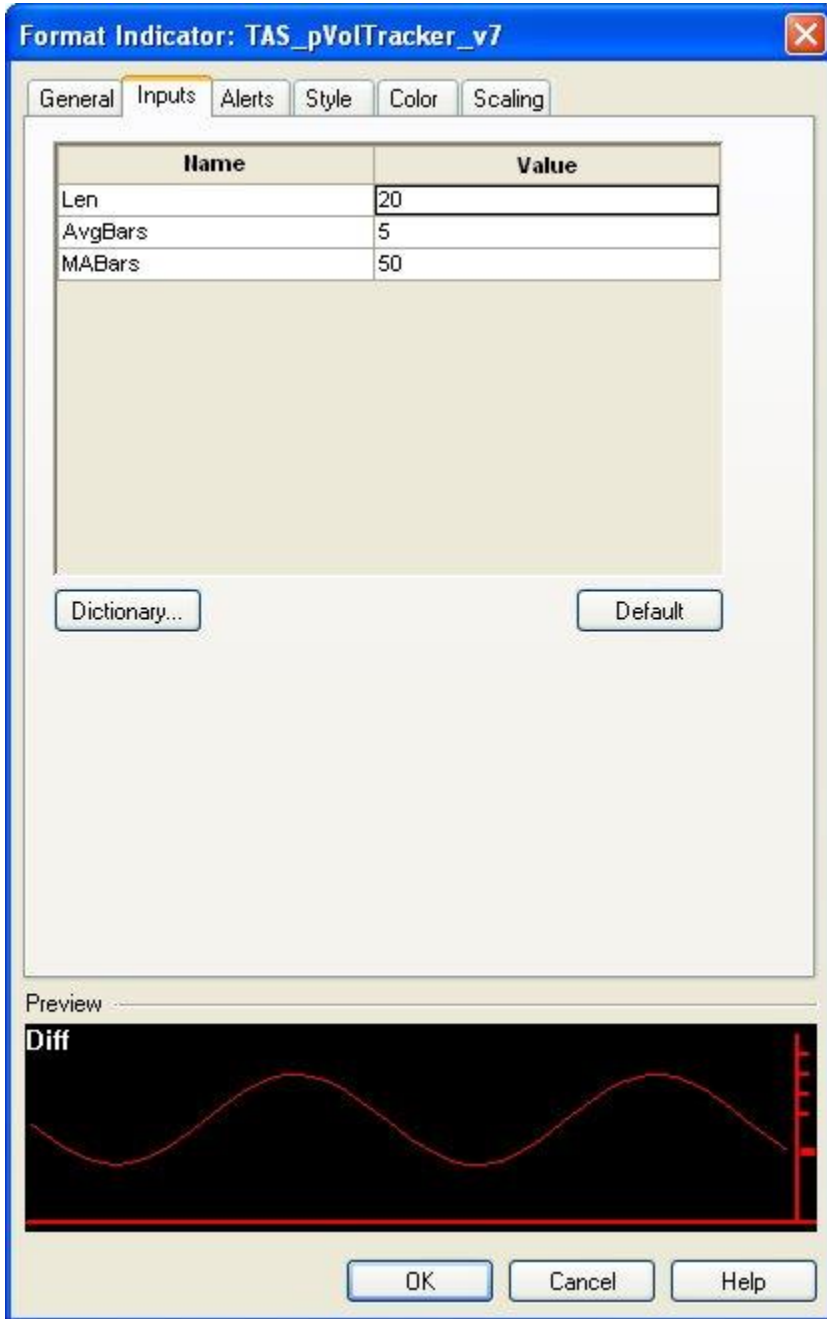
For your convenience, **TAS** will provide you with several workspaces that have been set up for you. These are the workspaces that Eddie Katinas uses in the **TAS Trading Workshop**. To load one of these workspaces, start TradeStation ®, then double-click on any of the supplied .tsw files. TradeStation ® will load the workspace, symbol, and indicators for you.

To add an indicator to your own chart window, first open a *Chart Analysis* window (File-> New-> Window, select 'Chart Analysis'). Set your symbol specific options by right clicking on the window and selecting *Format Symbol*.

For each indicator that you wish to install, right click on the window and select *Insert Analysis Technique*. Scroll through the list of available indicators and select the one you would like to insert (eg. *TAS_pVolTracker_v7* for the V7 Volume Tracker from **TAS**).

Once installed, each indicator needs to be configured. Right click on your chart window and select *Format Analysis Techniques*. Highlight the line your indicator is on and select *Format* (if *Format* is unavailable, you need to first change the indicators status to 'On' by clicking on the *Status* button).

The *Format Indicator* window will pop-up allowing you to configure your indicator.



The following tabs along the top of the *Format Indicator* window are for setting various options:

Inputs: This tab is for changing the default inputs **TAS** has supplied you with. To change a parameter, click in the window next to each parameter under the *Value* column, and type your new value. For values that require 'True' or 'False', you must type 'True' or 'False' (without quotes), not 'T' or 'F'.

Style: This allows you to change the style of indicator plots. Each plot has a name on the left that can be changed from *line* to *cross* or any of several other options, along with the line thickness.

Color: This allows you to change the color of indicator plots. Highlight the name of each indicator plot and change its color by selecting one of the colors in the *Foreground Color* window

Scaling: This is very important for indicators that are meant to appear **BELOW** the regular price in your chart window (eg, **TAS_pVolTracker_v7**, and **TAS_pVolTracker_v9**). Indicators by default will show up in the same window as the price. To change this, select *Right Axis* in the *Scale On* drop-down box, and select a *Sub-graph* value greater than 1. Sub-graph 2 is the first graph below the price, sub-graph 3 is the next, and so on.

Once you have change all of your *Inputs*, *Style*, *Color*, and *Scaling* options, click **OK**.

II. Indicator Descriptions

(1) TAS_tsMarketMap

This indicator shows a single version of the *TAS Market Map*. It will appear as a side-ways histogram on the price data. The histogram reflects the price action relative to volume traded. Red (wider horizontally) areas in the histogram reflect a higher volume of shares traded, while blue (narrower) areas reflect low volume price moves.



The yellow line indicates the price at which most of the volume action took place. The green lines indicate the boundary between the high action (red) areas and the low action (blue) areas

Inputs to TAS_tsMarketMap:

Bar1 : the number of price bars where the base of the map should start from. In the photo above, this would be 2.

Bar2 :. the number of price bars where the peak of the map should end at. In the photo above, this would be 50 (off the left of the image)

NumBins: how many lines will appear in the histogram (vertically).

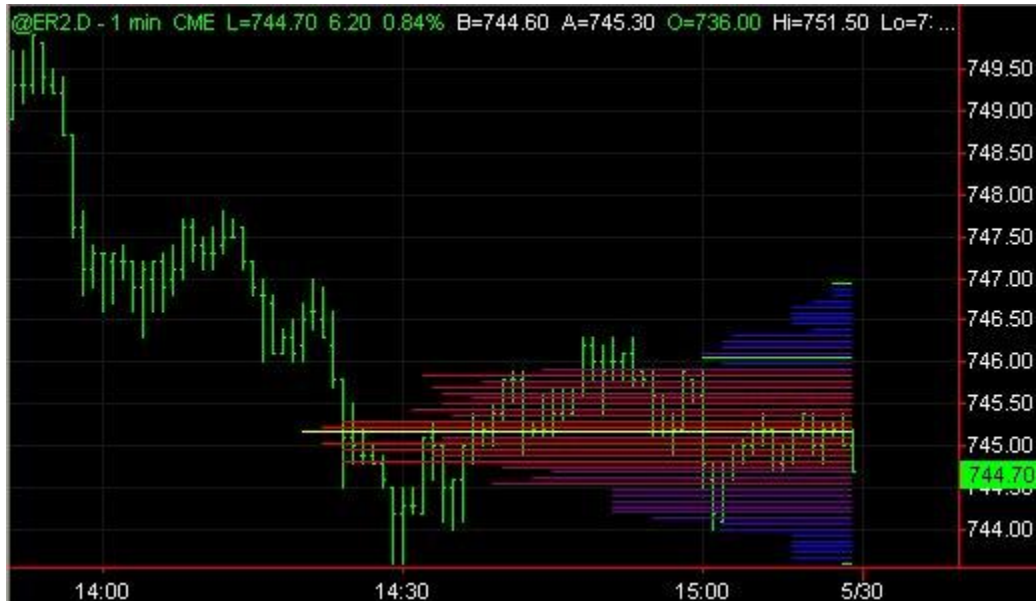
KeepStatic: If set to true, the map will 'stick' to the bar it was first drawn on instead of shifting onto new bars when new bars come out

For a right-facing map, just make $Bar2 < Bar1$.

III. Indicator Descriptions

(2) TAS_tsSwingMap

This indicator is version of the *TASMarketMap* that places itself (e.g. sets parameters *Bar1* and *Bar2*) based on recent price swings.



Inputs to TAS_tsSwingMap:

MinSignal_123: Either 1 (weak), 2 (medium), or 3 (strong) signals will be considered when forecasting market swings

Length: The number of bars to consider when forecasting swings

NumBins: how many lines will appear in the histogram (vertically).

SwingAtBase: the recent swing number for the base of the histogram. 0 means the latest price bar, 1 means the 1st swing back, 2 means 2nd swing back, etc.

SwingAtPeak: the recent swing number for the peak of the histogram. 0 means the latest price bar, 1 means the 1st swing back, 2 means 2nd swing back, etc.

(3) TAS_tsBoxes

This indicator shows several small versions of the *TAS Market Map* at various points along a price line. New maps are created when new swings are forecast in the market. Maps are calculated based on the price action from the previous map.



The top (red) line indicates the top of the red (high-value) area in a price map. It is equivalent to the top green horizontal line in the photo above of the example **TAS Market Map**. The center (cyan) line indicates the center of the HV area (yellow line in the market map photo), and the bottom (blue) line indicates the bottom of the HV area (bottom green line).

Inputs to TAS_tsBoxes:

MinSignal_123: Either 1 (weak), 2 (medium), or 3 (strong) signals will be considered when forecasting market swings

Length: The number of bars to consider when forecasting swings

MapLength: The number of bars behind each map used to create it. This is equivalent to the *Length* parameter for the *TAS Market Map* indicator

(4) TAS_tsStaticPCL

This indicator shows up to eight horizontal lines indicating daily *price compression levels*. These levels are calculated at the beginning of the day and do not change until the next day. They are only useful on INTRADAY data.



Inputs to TAS_tsStaticPCL:

- PlotR1*: Display the lower resistance line
- PlotR2*: Display the middle resistance line
- PlotR3*: Display the highest resistance line
- PlotS1*: Display the highest support line
- PlotS2*: Display the middle support line
- PlotS3*: Display the lowest support line
- PlotC1*: Display the first center line PCL
- PlotC2*: Display the second center line PCL
- PlotC3*: Display the third center line PCL
- Plot4*: Display the fourth center line PCL

(5) TAS_tsFloatPCL

This indicator is like the **StaticPCL** indicator but new PCLs are calculated when new swings in the market have been forecast. The PCLs are calculated from current price where swing is occurring back to the price at the last swing. They are only useful on INTRADAY data.



Inputs to TAS_tsFloatPCL:

MinSignal_123: Either 1 (weak), 2 (medium), or 3 (strong) signals will be considered when forecasting market swings

Length: The number of bars to consider when forecasting swings

PlotR1: Display the lower resistance line

PlotR2: Display the middle resistance line

PlotR3: Display the highest resistance line

PlotS1: Display the highest support line

PlotS2: Display the middle support line

PlotS3: Display the lowest support line

PlotC1: Display the first center line PCL

PlotC2: Display the second center line PCL

PlotC3: Display the third center line PCL

Plot4: Display the fourth center line PCL

(6) TAS_tsSwingPCL

This indicator is like the **StaticPCL** indicator but new PCLs are calculated when new swings in the market have been forecast. The PCLs are calculated from current price where swing is occurring back to the price from a certain number of swings ago (the SwingsBack parameter). They are only useful on INTRADAY data.



Inputs to TAS_tsSwingPCL:

MinSignal_123: Either 1 (weak), 2 (medium), or 3 (strong) signals will be considered when forecasting market swings

Length: The number of bars to consider when forecasting swings

SwingsBack: The number of swings back to calculate PCLs

PlotR1: Display the lower resistance line

PlotR2: Display the middle resistance line

PlotR3: Display the highest resistance line

PlotS1: Display the highest support line

PlotS2: Display the middle support line

PlotS3: Display the lowest support line

PlotC1: Display the first center line PCL

PlotC2: Display the second center line PCL

PlotC3: Display the third center line PCL

Plot4: Display the fourth center line PCL

(7) TAS_tsVixDiff

This indicator graphically displays the difference between a pseudo-VIX calculation and its moving average. It is displayed in green below the price, its moving average is displayed in red, and the zero line is displayed in blue. Excellent entry/exit triggers occur when this crosses its moving average:



Inputs to TAS_tsVixDiff :

Length : How far back (in bars) to look at recent price movement.

Smooth : How many bars to use for smoothing the resulting curve. A value of 1 will provide the timeliest values, but may appear jagged. Higher values will smooth the curve but may make the indicator lag.

MABars: Number of bars for internal moving average calculation

NormDays : How many *days* to use internally for price normalization. A number of days that provides a good average of highs and lows for the price should be used (5 is used above above, and should suffice for most charts).

GMABars : number of bars for the moving average of the difference (the red curve)

(8) TAS_tsRatio

This is a leading indicator that forecasts short-term price movements. It is useful for gauging the best trade entries and exits.



Inputs to TAS_tsRatio :

RangeBars : How far back (in bars) to look at recent price movement.

AvgBars: How many bars to use when averaging recent price action

MABars: Number of bars for the moving average curve (red line)

(9) TAS_tsVDVR

This indicator is a volume weighted combination of TASVolDelta and TASRatio.



Inputs to TAS_tsVDVR :

Length : How far back (in bars) to look at recent price movement.

RangeBars : How far back (in bars) to look at recent price movement.

AvgBars : How many bars to use when averaging recent price action

Smooth : How many bars to use for smoothing the resulting curve. A value of 1 will provide the timeliest values, but may appear jagged. Higher values will smooth the curve but may make the indicator lag.

NormDays : How many *days* to use internally for price normalization. A number of days that provides a good average of highs and lows for the price should be used (5 is used above, and should suffice for most charts).